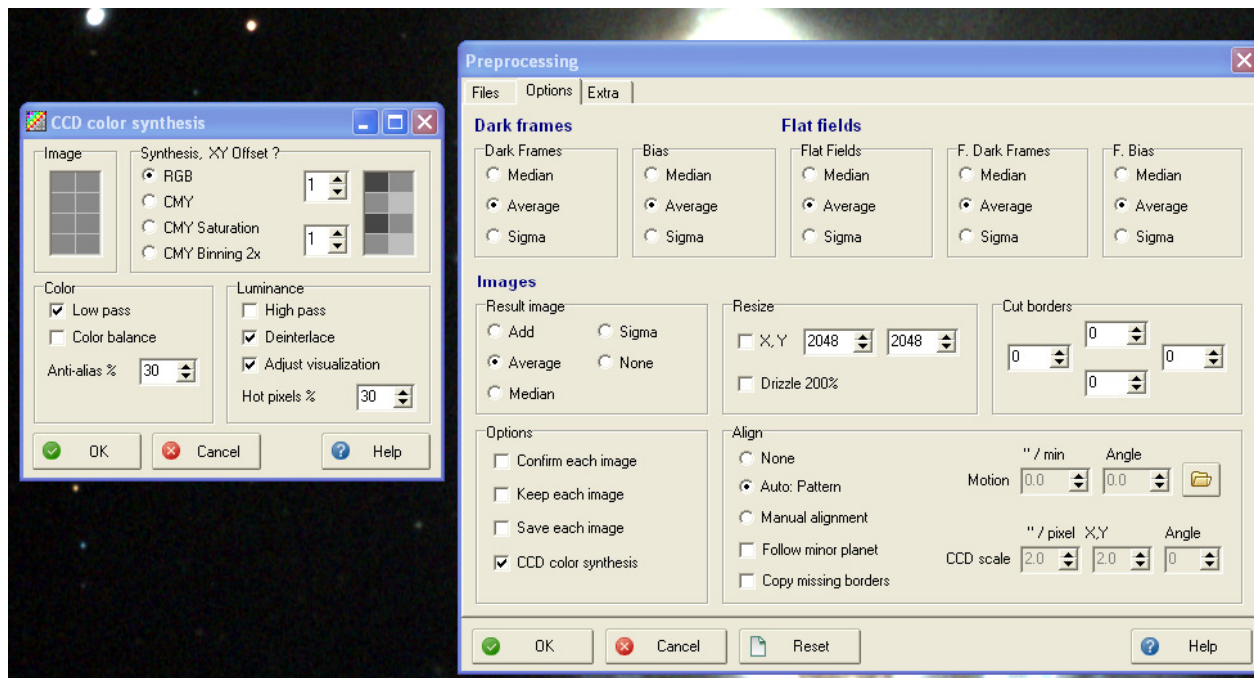


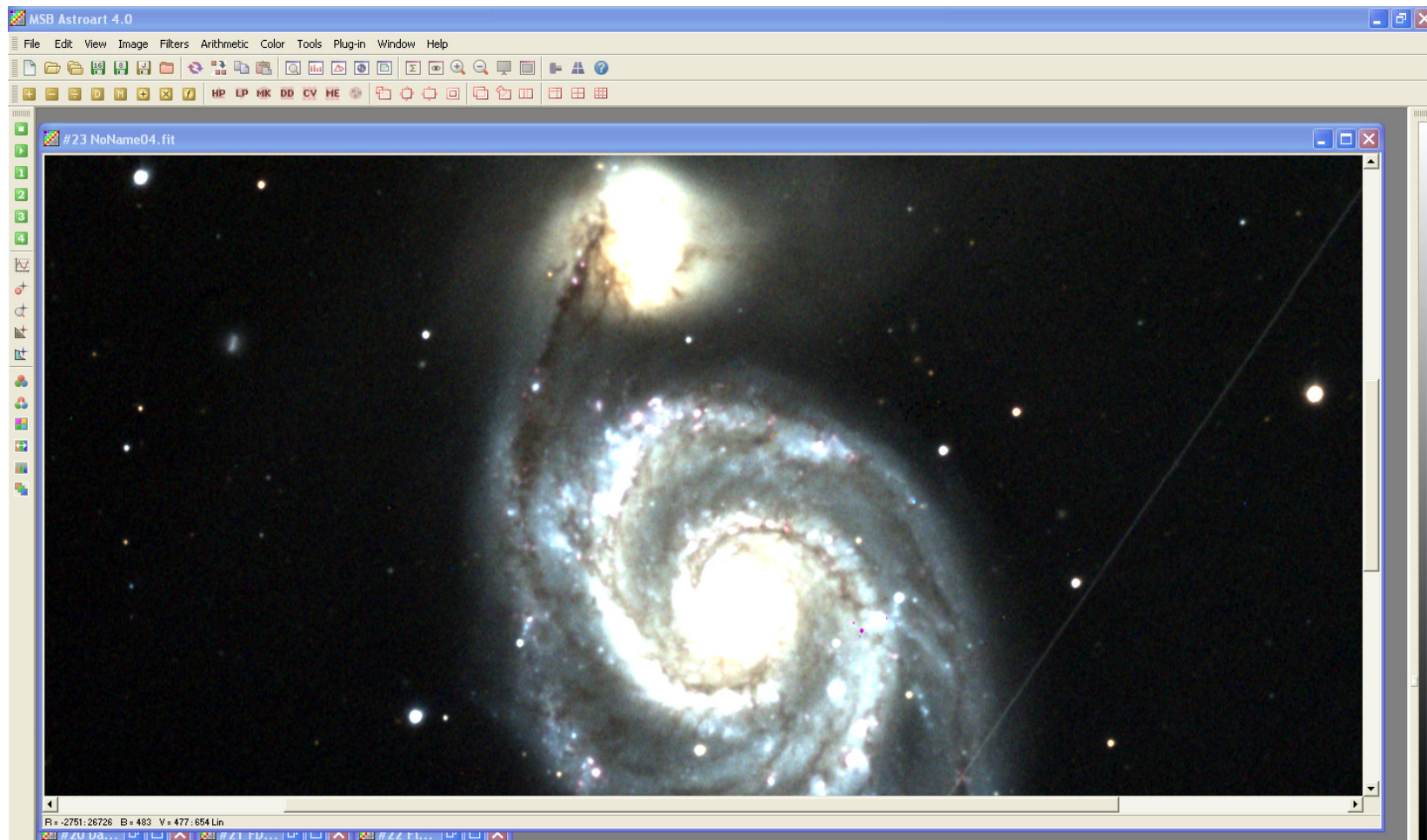
Processing

M51

- AstroArt

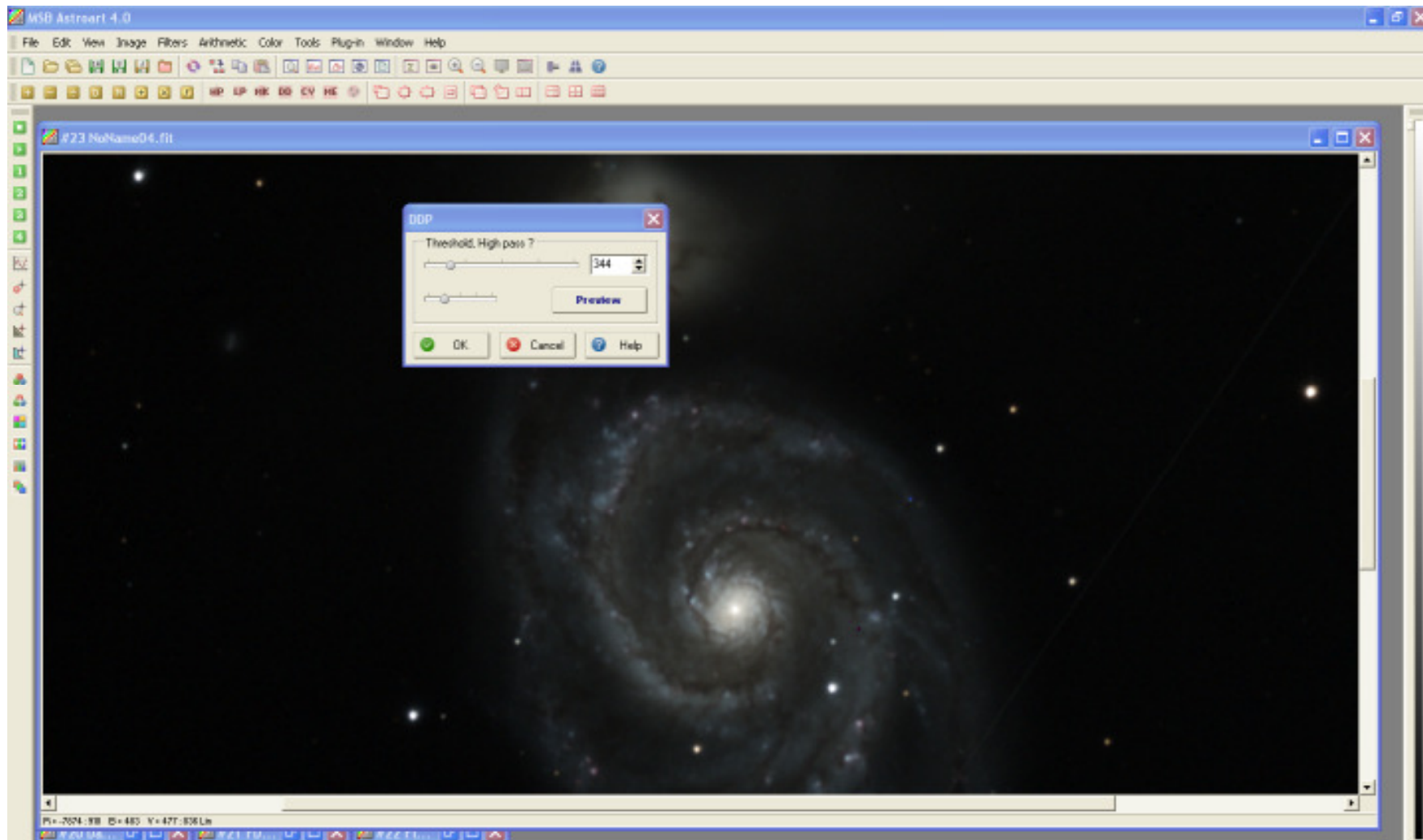


result



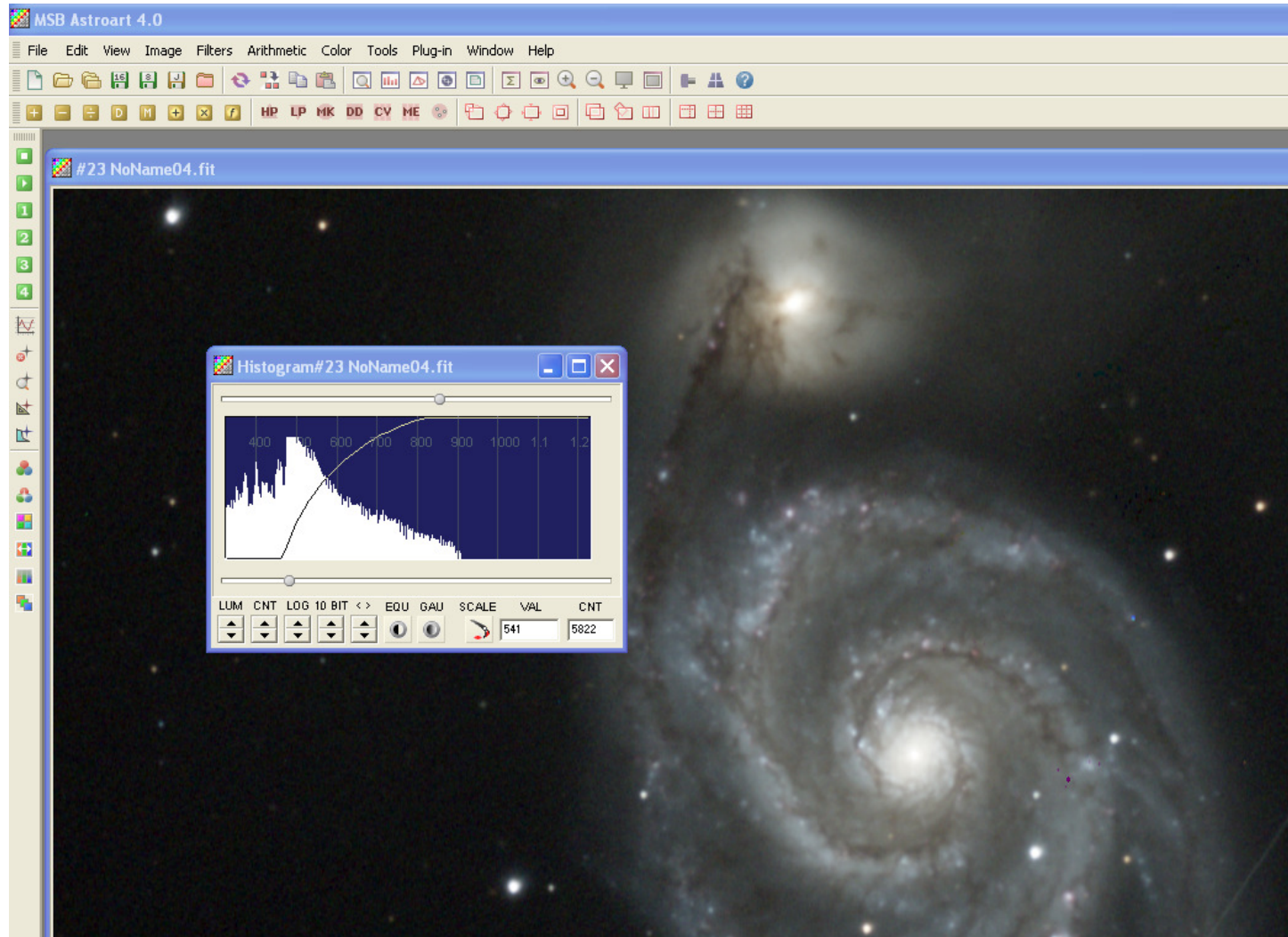
No hot spots

DDP

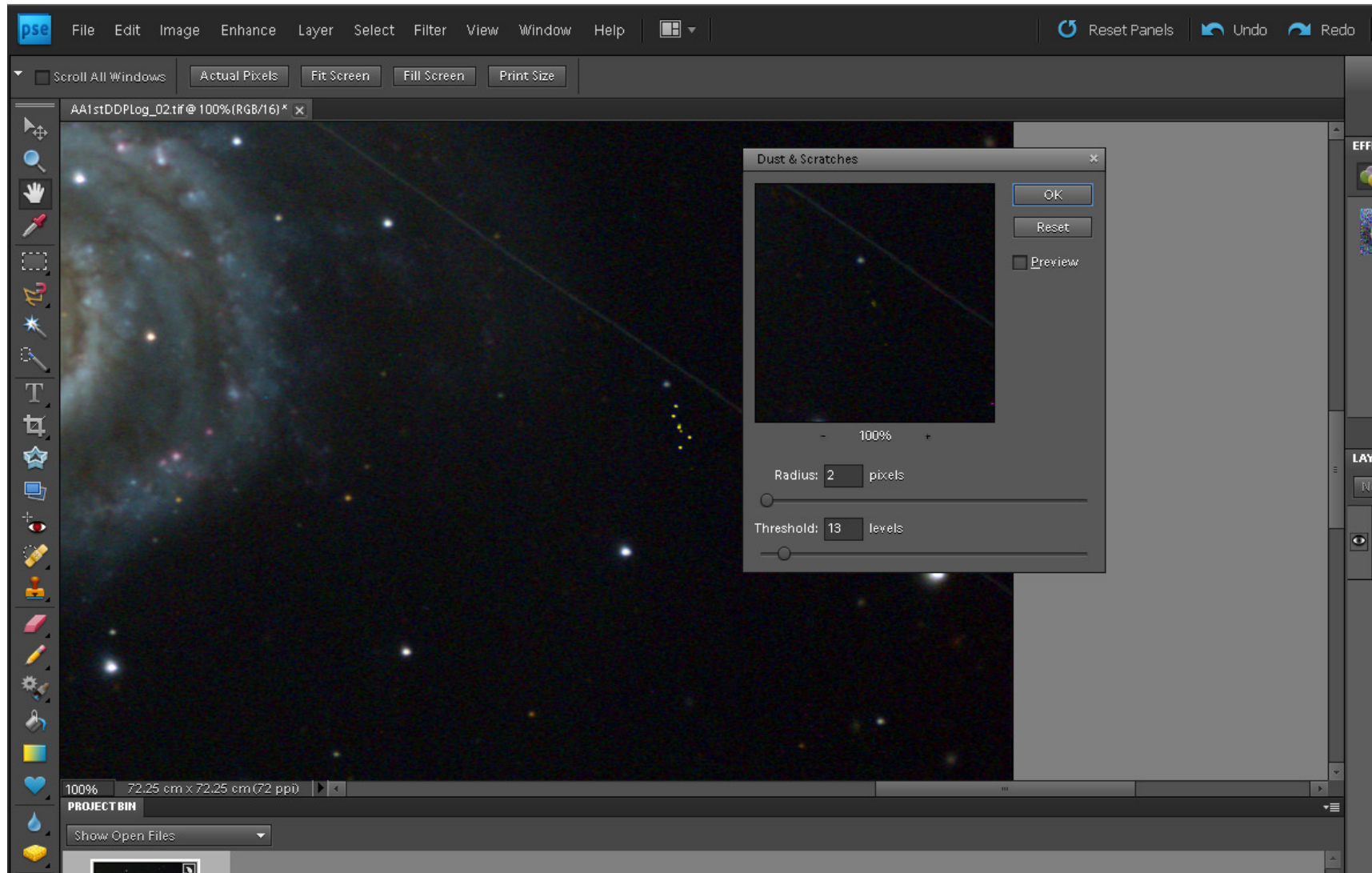


Adjust so center does not saturate

Log scaling

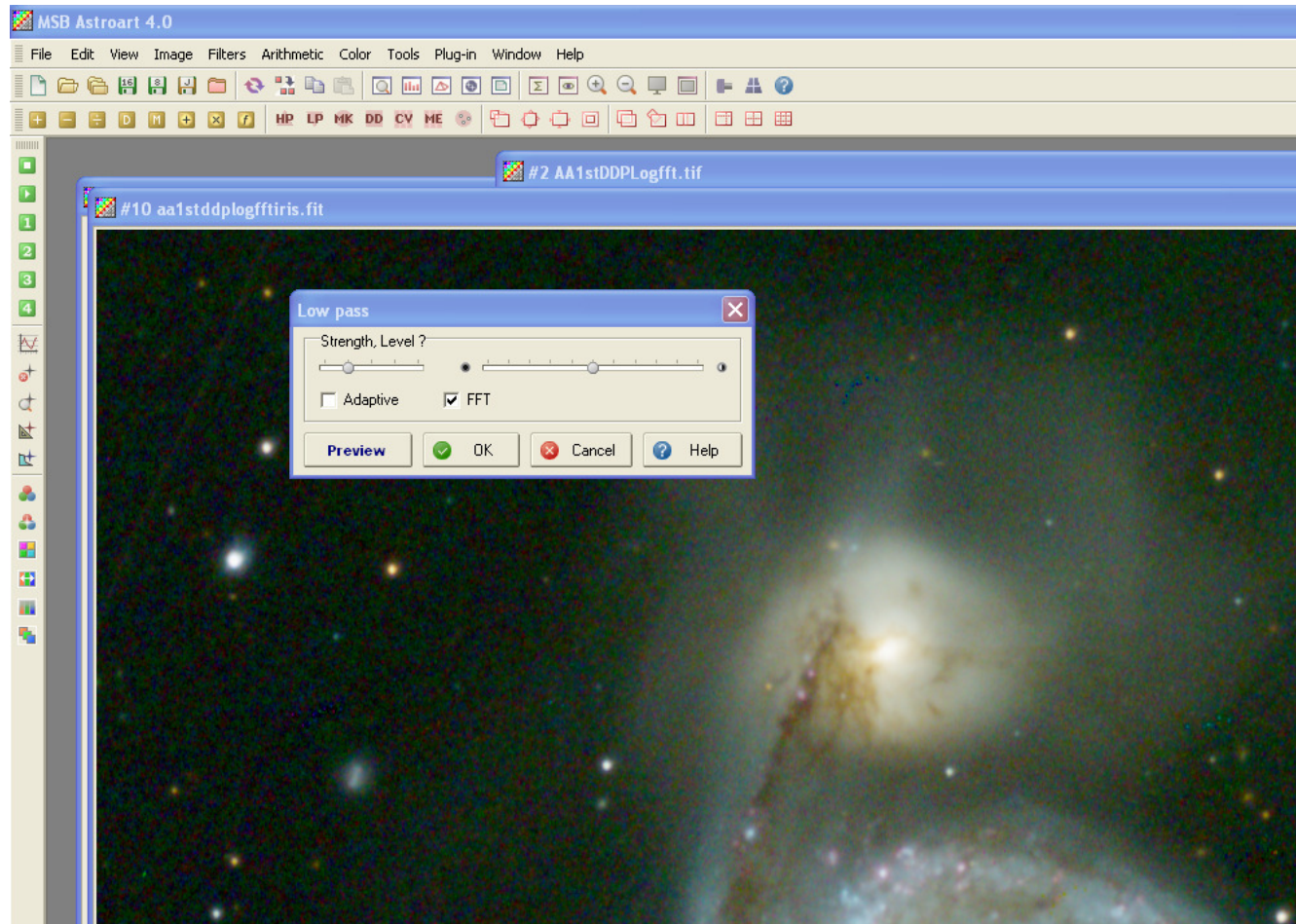


Remove artifacts



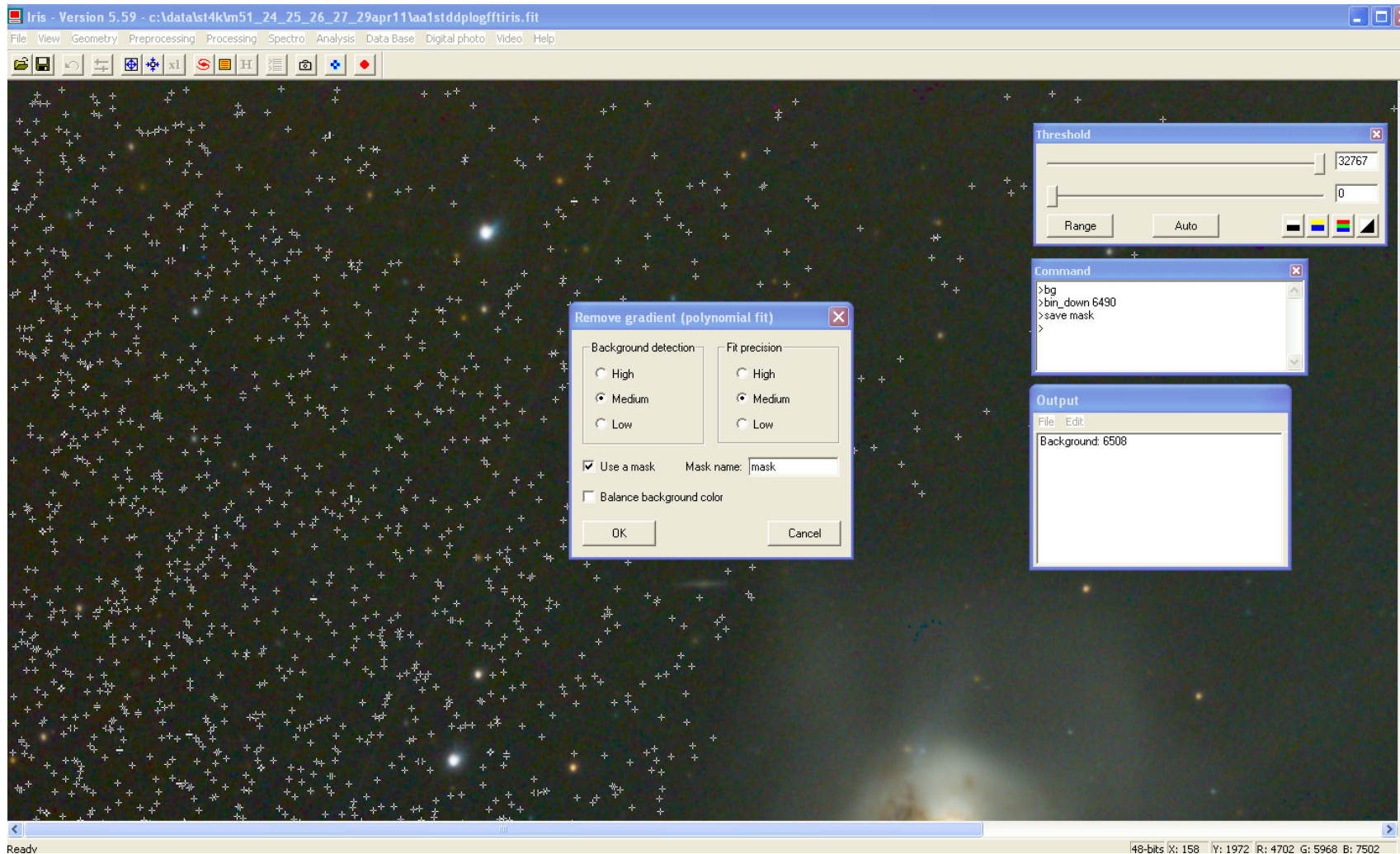
Remove hot pixels in PSE

FFT noise reduction



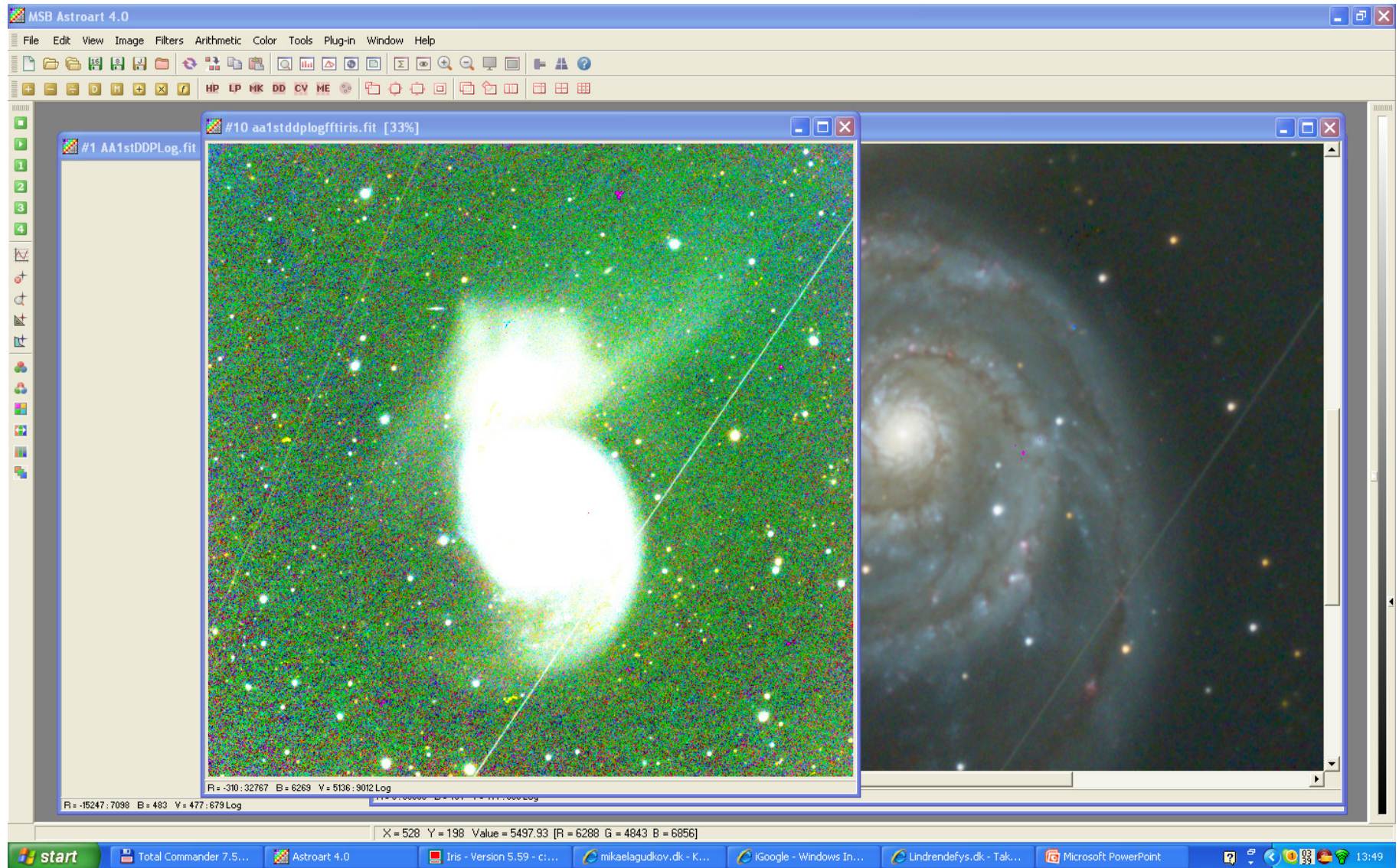
Save as TIF view to load into IRIS

Gradient removal in IRIS



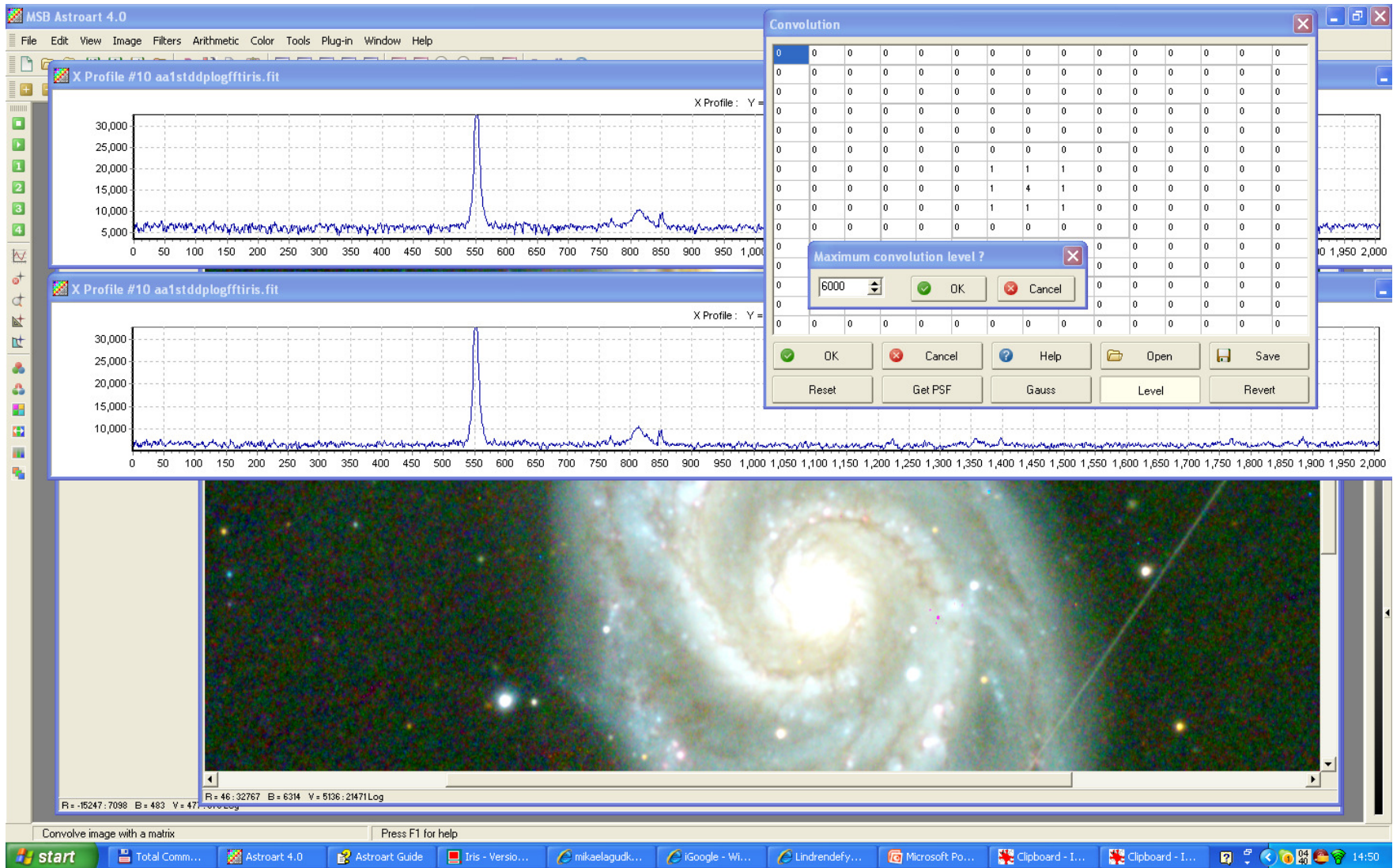
Save as FIT for re-opening in Astroart (Astroart cannot read the IRIS TIF format)

The field is now quite flat



Background noise red.

Filters - convolution



More backgr. Convolution

